

GRINDING | WELDING | SANDING | POLISHING

OVERVIEW

The Coral POLIJET DF downdraft table is an ideal solution for the extraction of dust and fumes generated from local bench top grinding, welding, sanding and finishing operations typically found in the following industries...wood, marble, metalworking, foundries, and more.

The Coral POLIJET DF bench top has an open slotted work surface designed to capture and extract all fumes and harmful dust created at the source, thus eliminating any health hazard for the employee performing the above tasks.

The Coral POLIJET DF is always operating at peak efficiency thanks to our pneumatic cleaning system. Compressed air stored in an internal tank allows the operator to initiate a back pulse cleaning of the filter cartridges. When the cleaning cycle is initiated, a blast of compressed air is released inside the filter cartridges creating a shock wave that forces the filter cartridges to release the particles from the surface. The collected solids fall by gravity to a lower collection bin. Clean air is returned to the working environment.

EFFICIENCY & ROBUST CONSTRUCTION

The Coral POLIJET DF is a self-contained work table featuring sophisticated filter cartridges (instead of usual filter bags), which are capable of filtering particle sizes down to approximately 0.2 - 2 microns, our **filtering efficiency is rated at 99.9%**.

The robust construction of the Coral POLIJET DF is assembled from steel panels bolted together which allows Coral POLIJET DF to **safely handle work loads of up to 60 lb/ft²** distributed on the tabletop.

The back wall of the Coral POLIJET DF table top also acts as a ventilation and extraction zone and is constructed from heavy duty galvanized steel panels which are removable so that maintenance can do inspections if necessary. Side walls are available to prevent and assist in the capture of pollutants and eliminate the further spread of the material. Pricing is available on request.

MANUAL CLEANING SYSTEM

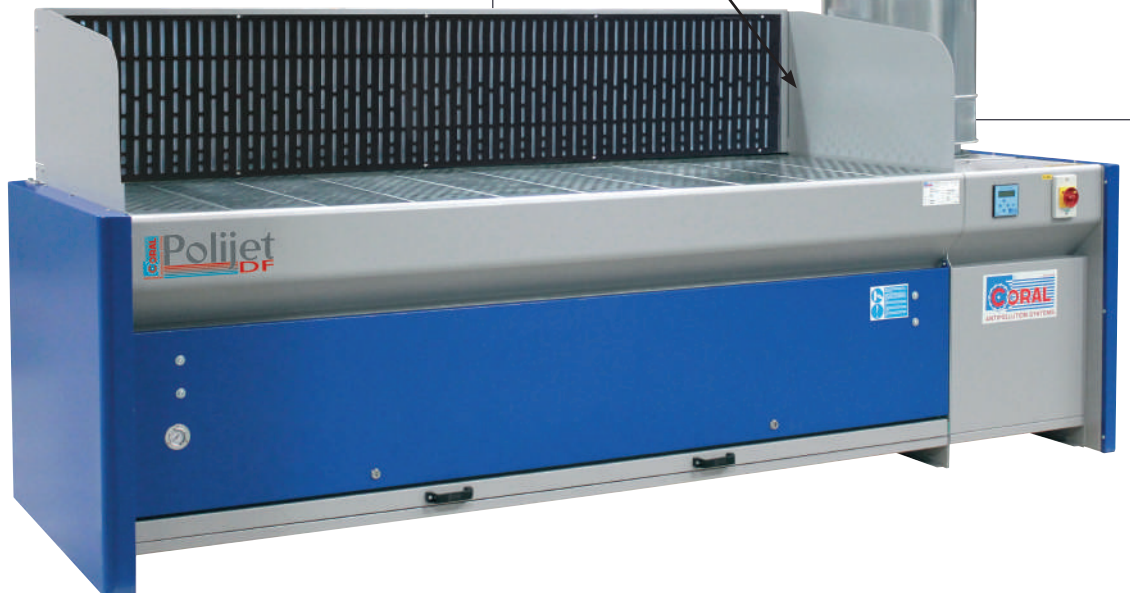
The Coral POLIJET DF "down flow" worktable has a large pre-chamber, where most of the heavy dust is separated and deposited in the collecting bin. The contaminated air then passes through our Coral high efficiency filter cartridges where 99% of the airborne dust is removed. Our Coral suction fan is located in a soundproofed box to ensure quiet operation. The cartridges are kept in perfect working order by programmable electronic compressed air cleaning system described above.

HORIZONTAL CARTRIDGES

The horizontal installation of our special Coral POLIJET DF cartridges allows for easy access and quick maintenance of the filter section. Where permitted, the filtered air is discharged into the work environment, which allows for **significant energy savings**.



• WIRE MESH PRE FILTER



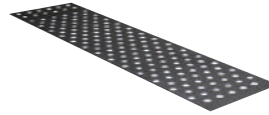
• FIXED SIDES

• AIR DIFFUSER

• AFON SILENCER

OPTIONS

• SUCTION TOP FELT LAYER

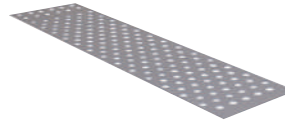


• SUCTION WALL LIGHT KIT



• AUTOMATIC FIRE EXTINGUISHER WITH CONTROL BOARD

• SUCTION TOP POLYPROPYLENE LAYER



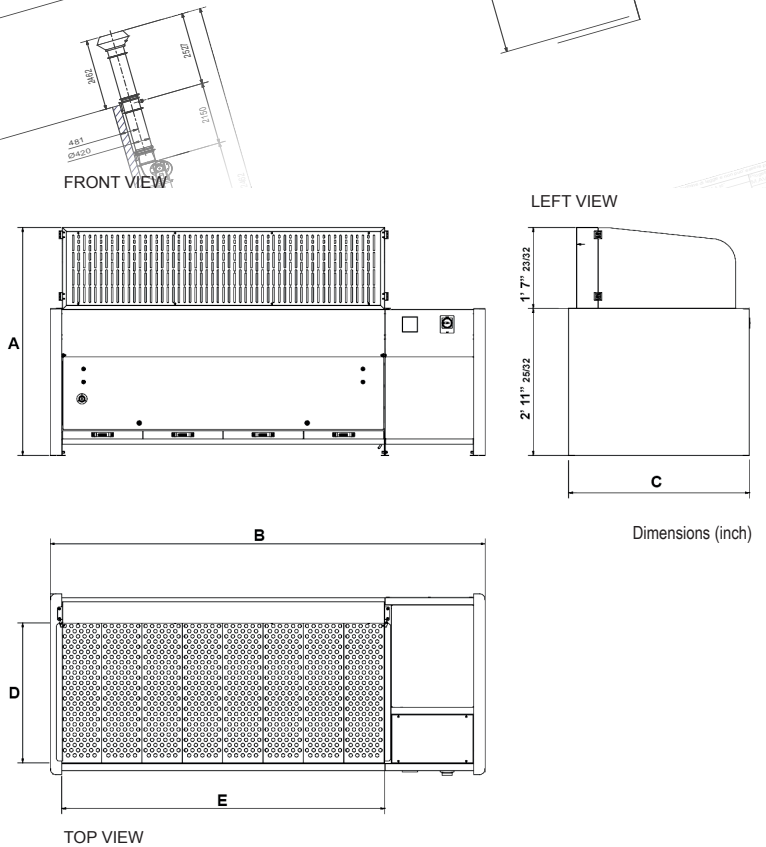
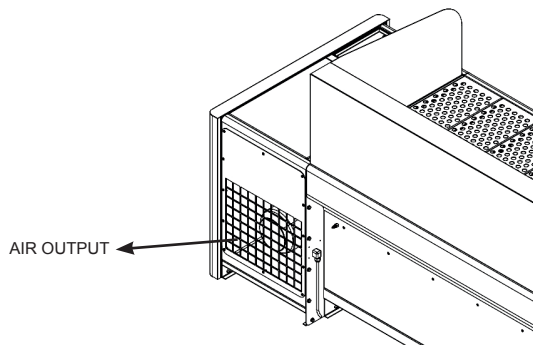
• TOTAL PAINTING

TECHNICAL FEATURES

OPERATING PRINCIPLE

DIMENSIONS

	POLIJET DF 1500	POLIJET DF 2000	POLIJET DF 2500
Height (A)	55.5"	55.5"	55.5"
Width (B)	86.3"	106"	125.7"
Depth (C)	44"	44"	44"
Polluted air inlet (ExD)	59" x 37"	78" x 37"	98" x 37"
Clean air output	Ø17.7"	Ø17.7"	Ø17.7"



PERFORMANCE

	POLIJET DF 1500	POLIJET DF 2000	POLIJET DF 2500
Power [HP]	4	5.5	7.5
Power supply voltage 3Ph [V]	440	440	440
Frequency [Hz]	60	60	60
Motor phase [Ph]	3	3	3
RPM	3450	3450	3450
Max flow rate [cfm]	2950	4000	4710
No. of collection drawers	3	4	5
Drawer storage capacity [Gal]	10,3	13,7	17,2
Peso [Lbs]	925	1124	1344

MAX. ALLOWABLE LOAD ON WORK SURFACE	POLIJET DF 1500	POLIJET DF 2000	POLIJET DF 2500
Distributed load [lbf/ft ²]	51,2	51,2	51,2
Useful support surfaces [ft ²]	14	18,3	22,6

NOISE LEVELS	POLIJET DF 1500	POLIJET DF 2000	POLIJET DF 2500
Sound level dB(A)	84	85,9	87,5
Sound level with afon dB(A)	76	77,4	78,5

